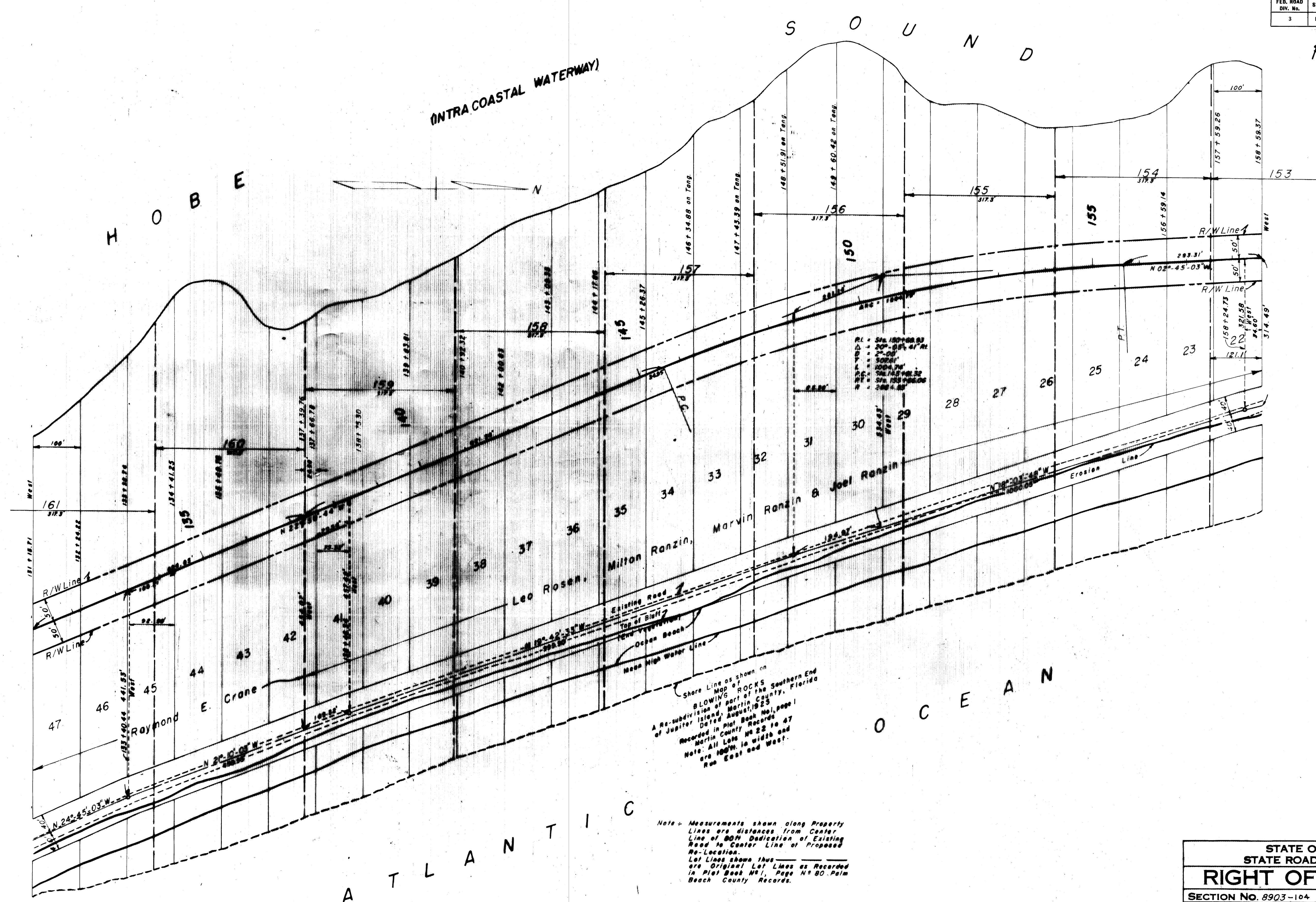


P.B. 7 pg. 50

FED. ROAD DIV. No.	STATE	SEC. AND JOB No.	FISCAL YEAR	SHEET No.	TOTAL SHEETS
3	FLA.	8903-104	53	3	7

P.B. 7 pg. 50



Shore Line as shown on Map of BLOWING ROCKS A Re-subdivision of part of the Southern End of Jupiter Island, Martin County, Florida Dated August, 1923 Recorded in Plat Book No. 1, page 1 Martin County Records Note: All Lots No 22 to 47 are 100' in width and Run East and West.

Note - Measurements shown along Property Lines are distances from Center Line of 60' Dedication of Existing Road to Center Line of Proposed Re-Location. Lot Lines shown thus are Original Lot Lines as Recorded in Plat Book No. 1, Page No 90 Palm Beach County Records.

STATE OF FLORIDA
STATE ROAD DEPARTMENT
RIGHT OF WAY MAP
SECTION NO. 8903-104
ROAD NO. 707
MARTIN COUNTY

SCALE 1"=100'	NAMES	DATE	APPROVED BY
DRAWN	Collins	2-53	<i>W. Collins</i>
TRACED			
INDEXED			
REVISED			

DIVISION ENGINEER
STATE HIGHWAY ENGINEER